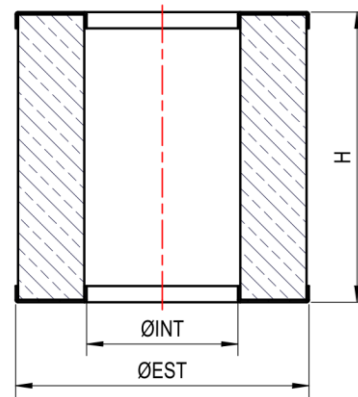
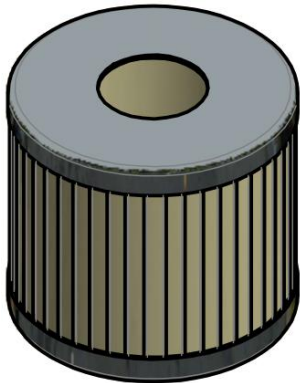
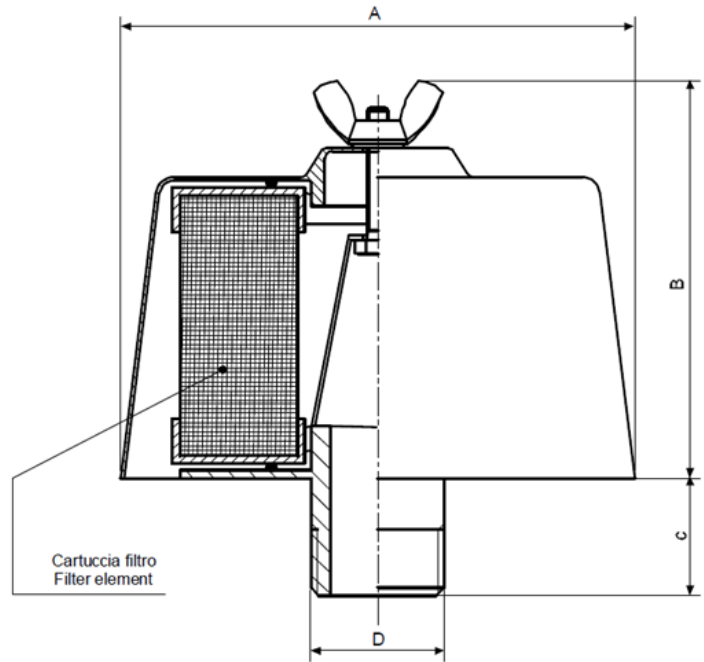


## FILTRO IN ASPIRAZIONE

## INTAKE FILTER



Subject to change without prior notice

Modello Model	Codice Code	m <sup>3</sup> /h (1)	A	B	C	D	kg	Cartuccia Element	Ø INT	Ø EST	H	Materiale Materiel	µm	MAX °C
FAS 140	9001058	140	Ø130	100	40	1"G	0,7	1801037	60	87	76	Carta / Paper	40	50
FAS 170	9001111	170	Ø130	100	40	1-1/4"G								
FAS 200	9001060	200	Ø130	130	45	1-1/2"G	0,9	1801038	60	87	114	Carta / Paper		
FAS 420	9001061	420	Ø172	160	50	2"G	1,5	1801039	65	122	135	Carta / Paper		
FAS 660	9001062	650	Ø195	160	60	2-1/2"G	2,1	1801040	90	152	135	Carta / Paper		
FAS 1200	9001112	1200	Ø290	190	60	3"G	3,5	1801112	146	201	157	Carta / Paper		
FAS 2300	9001086	2300	Ø320	300	60	4"G	4,8	1801061	190	255	210	Carta / Paper		

(1) Portate rilevate con perdite di carico di 10 mbar  
 (1) Flow rate measured with 10 mbar pressure loss